

SO YOU WANT TO APPLY TO A SOCIAL PSYCH GRAD PROGRAM?

BEFORE YOU APPLY



TAKE RELEVANT COURSES

- Cultivate your interests
- Get good grades



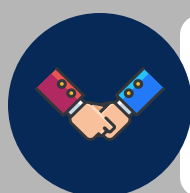
PRESENT YOUR WORK

- Posters, presentations
- Attend [conferences](#)



GET RESEARCH EXPERIENCE

- Be an RA or [lab manager](#)
- Independent project/thesis



NETWORK WITH OTHERS

- Talk to your professors
- Find mentors



Discuss grad school with your mentors! *Who is doing quality research? Whose research aligns with your interests? Who would be a good supervisor? What career will grad school prepare you for?*

A SUGGESTED APPLICATION TIMELINE

1

JUNE - AUGUST



Look into prospective programs & supervisors

- Talk to mentors; look at program & lab websites
- Draft a list of programs you're interested in



Study for & take the GRE

- Check requirements ([not all programs require it](#))
- Note differences between the [General](#) & [Subject](#) GRE

2

SEPTEMBER



Finalize list of programs & create an organization system

- Write down **required components** of each app
- Apps cost \$; look into [programs for fee waivers](#)



Contact prospective supervisors

- **Check websites** to see if they're accepting students & if they want to be contacted before you apply
- Helpful guides: [UC Davis's Luck Lab](#) & [Tufts](#)



Begin writing your statements

- **The earlier you begin, the better**
- May include CV, statement of interest, personal history & diversity statements



Look into funding opportunities (e.g., [NSF](#), [SSHRC](#), university fellowships)

- Norms for whether and when to apply **vary** - ask around!
- Look for **online resources** (e.g., for the [NSF-GRFP](#))

3

OCTOBER



Secure your recommendation writers

- You typically need **three** letter writers
- Ideally, writers know you as a **researcher & student**



Order transcripts & [GRE reports](#)

- If an international school requires official paper transcripts (i.e., international mail), **do this early!**



Keep working on your statements

- Ask for **examples & feedback** from mentors, supervisors, friends, etc.
- Look for **online resources** (e.g., [IUPUI](#)'s guide)

4

NOVEMBER



Officially request letters of recommendation

- **1 month before** first deadline send writers info they need to **write & submit ALL** of your letters
- **Waive your right to view your letters!**



Get to know your application submission portals

- They differ per program & can be hard to navigate
- **Some require submitting ALL materials before letter writers can submit their letters - plan ahead!**



Finish your statements

- Tailor statements to each school & supervisor
- **Double-check spelling** of supervisor & university names!

5

DECEMBER AND BEYOND...



Submit your apps & celebrate!

- Many deadlines fall on **December 1st**, but can span November through March

THERE IS NO "CORRECT" WAY TO APPLY. PEOPLE FIND SUCCESS VIA MANY DIFFERENT ROUTES. DON'T BE AFRAID TO ASK OTHERS FOR ADVICE!